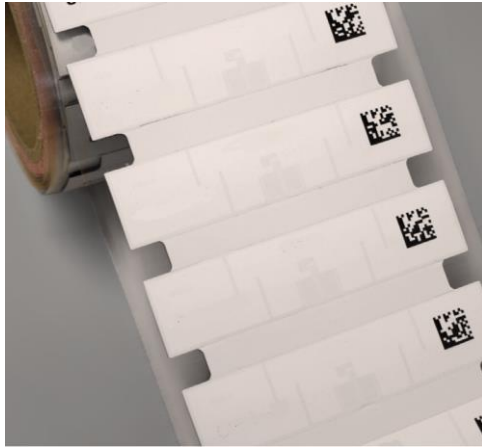


# DATA SHEET



## AGX MoM 600 Tag (Mount on Metal Label)

<b>Product Description</b>		<b>AGX MoM 600</b>
<b>Physical Specifications</b>		
Material	White synthetic label	
Size (mm) (tolerance)	96.0 x 24.0 x 1.1 mm with ground plane	
Weight	2 gr	
<b>RF Specifications</b>		
Protocol	EPC Class 1 Gen2	
Frequency Range (MHz)	866 - 868 (EU) 902 - 928 (US)	
Read Range (Fixed reader) 1	5 - 6 m (depending on Chip type and environment)	
Read Range (Handheld reader) 1	2,5 - 3 m (depending on Chip type and environment)	
Material Compatibility	Optimized for metal	
IC Type (chip)	Monza R6 or 4QT	
Memory	EPC - 96bits, User - 0bits, TID - 48bits (Monza R6 Chip type) EPC - 128bits, User - 512bits, TID - 48bits (Monza 4QT Chip type)	
<b>Environmental Specification</b>		
Operating Temperature	-20 to +85 °C	
Application Temperature	+18 °C to +35 °C	
IP Rating	IP68	
Attachment	Self-adhesive suitable for curved surfaces to a minimum radius of 58mm	
Certifications	RoHS approved CE approved	
Printer validation for Standard Version:  Sato CL4NX		
<b>Article no:</b>		
Article no:	<b>AGX MoM 600</b>	
<b>Typical Applications</b>		
Suitable for metal environment	Automotive	
Maintenance & Service	Oil & Gas, Offshore	
Industrie & Logistics	Chemical Industry	

**Contact:**

sales@agilox.com  
www.agilox.com