

DATA SHEET



AGX X8 RFID 4,7" display Auto-ID & RFID Handheld

Product Description (partially optional)

Main Features

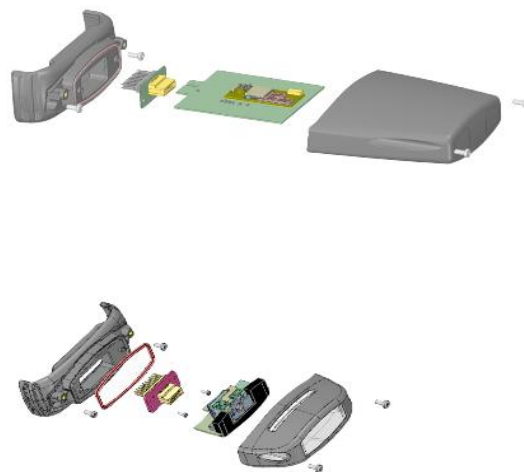
Industrial extremely rugged PDA
IP67
Texas Instruments 4470 Dual-Core @ 1.5GHz
3.8G, GSM/GPRS/EDGE, WLAN
4,7" Capacitive Multi-Touch Display

Integrated 1D/2D barcode scanner (optional)
8.0 MPixel auto focus camera & flash
A-GPS receiver with integrated antenna (optional)
Standard Power Pack 5.200mAh battery
Android 4.2.2 or WIN Mobile Embedded 6.5.3
RFID LF, HF or UHF (optional)

Product pictures



Standard device



Optional RFID or Scanner TopCap

Article no:	AGX X8 WM Embedded	AGX X8 WM
	AGX X8 Android 4.2.2	AGX X8 AND

Typical Applications

- Manufacturing
- Security
- Waste management
- Logistics

- Health Care
- Asset management
- Food
- Transportation

- Service Maintenance & Diagnostics
- Automotive
- Retail & POS
- Home Automation

Contact:

sales@agilox.com
www.agilox.com



Technical Specifications	AGX X8 RFID
Platform	
CPU	Texas Instruments 4470 Dual-Core @ 1.5GHz
Operating System	Windows Embedded Handheld 6.5.3 Android 4.2.2 (Non-GMS/Google Play version)
Performance Charateristics	
Memory	1 GB RAM/4 GB iNAND Flash
Expansion Slot	micro SD 8 GB - 32 GB
Connectors	USB A Host USB Micro (PC Synchronisation and charging) DB9 RS-232 Serielle 3.5 mm Headset (Stereo & Microfon)
Physical Charateristics	
Dimensions (mm)	190.9 mm x 79.7 mm x 34.6 mm
Weight	490 g incl. Battery pack
Keyboard (User swappable)	Numeric Keyboard (Programmable keys)
Battery	Li-Ion, 3.7vm 5200mAh (19.2 Wh)
Display (Touch)	4.7" FWVGA (854x480); IPS; 600 Nit, capacitive Multi-Touch Asahi Dragontrail hardened glas
Sound & Mic	integrated loudpeaker, Receiver, Mic
LED & Indication	Charging LED, Network LED, Scan alarm LED, Modifier key status LED, Vibration
Scanning & Communications	
Camera (optional)	8.0M pixel auto focus camera with flash
Scanner (optional)	1D/2D Scanner module - Zebra SE4750SR Sensor Resolution: 1280 x 960 pixels Reading distance: Up to 1 meter
RFID (in TopCap optional)	
UHF	860 - 915 MHz Gen 2
HF	13.56 MHz, ISO14443A/B, 15693, 18000-4
LF	125kHz or 134.2 kHz (FDX/HDX)
Wireless	
WLAN (optional)	IEEE 802.11 b/g/n
WPAN (optional)	BT Klasse 2 (10m), V3.0 in Android OS and V 2.0 in Windows Mobile OS
WWAN (optional)	VoIP , 3.8G GSM HSPA+/HSUPA oder CDMA EVDO Rev. A. Verizon-certified
GPS (optional)	u-blox® GPS with integrated antenna
Accessories	
Cradle	Desktop charger Vehicle cradle
Others	Leather case, Sync cable, Hand strap, Stylus pen, Adaptor, Screen protector, etc.
Environment	
Operating Temperature	-30°C to 60°C
Storage Temperature	-40°C to 70°C
Humidity	5% - 95% non-condensing
Drop	multi-drop resistance to concrete from 1.25m
Rain & Dust protection	IP67 MIL-STD-810G
Approvals	CE, RoHS

Contact:

sales@agillox.com
www.agillox.com

Technical Specifications

AGX X8 with RFID Options



AGX X8 with RFID

Reader/Antenna
integrated in the
TopCap

Technical Specifications

AGX X8 Accessories



Contact:

sales@agilox.com
www.agilox.com